



LSCBN

Annual

Safeguarding Report

2009-2010



Date: August 2010

Contents

Subject	Page
Introduction	3 – 5
Governance Arrangements	6 – 7
LSCBN Structure	8 – 9
LSCBN Membership & Support Arrangements	10 – 11
LSCBN Committee Updates	12 – 18
e-Safety	19
LSCBN Achievements	20 - 21
Child Protection Information	22 – 24
Finance Information	25
LSCBN Business Plan 2010-11	26 – 35

Introduction and summary of achievements

This document combines a review of the Local Safeguarding Children Board Northamptonshire (LSCBN) for 2009-10 and the Business Plan for 2010-11.

As the Vice Chair of the Local Safeguarding Children Board Northamptonshire I am delighted to report the activities and achievements of the partnership over the last twelve months. I must pay tribute to the outgoing Independent Chair Chris Few and to all our partners who together have established a strong framework for protecting children in Northamptonshire and welcome Janet Galley who has been appointed as new independent chair of the LSCBN.

Child abuse is everybody's business and is preventable not inevitable. The key to our success lies in a shared responsibility across all agencies and effective joint working throughout the county. Early intervention is vital in this high profile work and the Board has continued to ensure that policies, procedures and training programmes are in place to strengthen our front line response to protect those children in need.

This last year has been an eventful, diverse and challenging year for the LSCBN. During 2009-2010 the work of the board has been framed in the context of a number of national and local drivers. A key driver for all LSCB's has been addressing the legislative and practice changes resulting from the Government's action plan produced in response to Lord Laming's Review of Progress in Child Protection in England. The LSCBN has been responding to these changes throughout the year undertaking a range of activities to ensure its work takes account of the implications resulting from the Government's action plan and Working Together (2010) published in March.

This year has seen a number of significant achievements in the work of the Board.

- In May 2009 the Board agreed an ambitious Business Plan and has now completed a number of projects to enhance Board effectiveness. These include, amongst others, development of:
 - a robust Performance Framework and Safeguarding Scorecard mapped to the reporting mechanisms of both the local authority and Children & Young People's Partnership Board.
 - a Business Plan reporting framework to RAG rate and measure progress in implementing the board priorities, agreed specific actions and the resulting impact
 - a new financial reporting framework to support the board's business and decision making processes
 - a new LSCBN Constitution formalising the expectations of partner agencies and individual board members in undertaking board activities
 - a new LSCBN website, incorporating revised web-enabled inter-agency safeguarding procedures, children and young people's area and secure log in area for board members
 - a multi-agency e-safety steering group and implementation of an overarching e-strategy and associated acceptable use policies

- The LSCBN Learning & Development Committee has through the work of its Training Coordinator and training pool delivered a comprehensive multi-agency training programme. This wide ranging programme culminated in the highly successful LSCBN Annual Conference; Learning from Serious Case Reviews in May 2009.
- A Serious Case Review Bulletin has been produced and shared across all partners and stakeholders on a six monthly basis. The LSCBN has contributed to three cross-border Serious Case Reviews with other authorities resulting in improvements in both process and practice. As well as distilling the learning from the reviews themselves the LSCBN has sought to bring forward the learning from processes within cross border reviews to establish best practice. The learning from all three reviews is being embedded to ensure substantial improvements in the way that our children and young people are safeguarded.
- The LSCBN has enhanced its membership through the addition of new members including the County Council Lead Member for Children and representatives from the School's Headteacher Forums. The Communications and Engagement Committee have implemented a communications strategy and action plan to develop understanding by all sections of the Community, including children and young people themselves, of their role in safeguarding children and their engagement in doing this. Work has also been undertaken to strengthen links with the Safeguarding Adults Board.
- The Board has also strengthened its links with the Children & Young People's Trust Board through revision of its joint protocol. The Business Plan refresh was informed by the outcome of the joint Children & Young People's Trust Board & LSCBN event held on 10 December which focussed on a refresh of the Children & Young People's Plan. The Annual Report itself will further inform a new plan to be produced for 2011/12 to ensure that it remains focussed on safeguarding priorities for the county and that it demonstrates evidence of impact on outcomes for children and young people with a particular focus on vulnerable groups.
- Building upon existing arrangements for responding to child protection the Board has overseen the implementation of the Child Protection Medical Service and a Sexual Assault Response Centre enhancing the way that agencies work together to identify whether significant harm has occurred and improving their response to it. The Board has also received its first Annual report from the Child Death Review Committee regarding the arrangements in place to review all occasions when a child dies with a view to identifying and addressing ways of reducing the number of these tragedies.
- During the last year there have been a number of positive changes in the professional support provided to the Board through its Business Office. A new Standards, Research and Development Manager was appointed in May 2009 and following a period of vacancy, the Business Office has been further strengthened by appointments to the posts of e-Safety Officer, Serious Case Review Business & Development Assistant. More recently the business office has also been supported by the secondment to an additional role of a part time Senior Administrative

Assistant. The work of the team within Business Office has been instrumental in ensuring Board effectiveness.

- Building upon these foundations and in the context of the Children and Young People's Plan, together with a number of significant recent and planned developments in the national agenda for safeguarding and promoting the welfare of children the LSCBN has refreshed its Business Plan and has identified four key priorities for its work during the next year.
 1. The LSCBN has effective structure, processes and resources in place to secure better outcomes and carry out its functions
 2. Staff Recruitment, Training and Support arrangements meet or exceed the national standards for safeguarding children and young people
 3. The LSCBN engages communities and organisations in safeguarding children & young people
 4. All children and young people are safeguarded through universal, proactive targeted and responsive protective services

These improvement priorities are intended to ensure that children and young people in Northamptonshire are effectively safeguarded and their impact will be measured through a refreshed LSCBN Performance Framework. The objectives agreed in support of these priorities will be key to taking the work of the LSCBN forward with the coming year set to be another ambitious but promising one in terms of achievements.

Adrian Bell
LSCBN Vice Chair

Governance Arrangements

The Local Safeguarding Children Board is accountable to the Corporate Director of Children & Young People and the Lead Member for Children's Services who have a particular focus on how the Local Authority is fulfilling its responsibilities to safeguard and promote the welfare of children and young people.

From April 2010, there is a requirement that the Chair of the Local Safeguarding Children Board will report on the effectiveness of the arrangements to safeguard children in Northamptonshire. The LSCBN will produce a report for the Children's Trust Board in early 2011 that will be based on the outcome of a Section 11 multi agency audit due to take place in the autumn 2010.

The LSCBN's own activities are part of the Children and Young People's Plan and this enables its work to be scrutinised by the Local Authority, by other local partners and other key stakeholders.

The LSCBN has a clear and distinct identity within Northamptonshire's Children's Trust Board. The Chair of the LSCBN is a member of the Children's Trust Board, and holds that Board to account for ensuring that safeguarding is central to all its activities. The dual accountability for safeguarding is detailed in the Children's Trust Board Terms of Reference.

Whilst the LSCBN plays the key role in co-ordinating and ensuring the effectiveness of local individuals and organisations work to safeguard and promote the welfare of children, it is not accountable for their operational work. Each Board partner retains their own existing lines of accountability for safeguarding and promoting the welfare of children by their services. The LSCBN does not have a power to direct other organisations but will advise the Local Authority and Board partners on ways to improve. When there are concerns about the work of partners and these cannot be addressed locally, the Chair of the LSCBN will report these to the most senior individual in the partner organisation, to the relevant Inspectorate, and, if necessary, to the relevant Government department.

The local audit framework will play an important role in monitoring and assessing the work of the LSCBN. The national inspection arrangements led by Ofsted include an annual unannounced inspection of safeguarding and a full inspection of safeguarding and services for looked after children at least once every three years. Northamptonshire had its unannounced inspection in August 2009.

In their findings, Ofsted found no areas of the service needed priority action. They found that the council takes prompt action to ensure children's safety, and that there were no unallocated cases within the service.

The report also noted that work requiring a child protection response is allocated appropriately to more experienced social workers and the cultural and religious needs of children are taken into account.

The Ofsted findings highlight several strengths of the service, including:

- the involvement of children in their assessments with their feelings and wishes taken into account

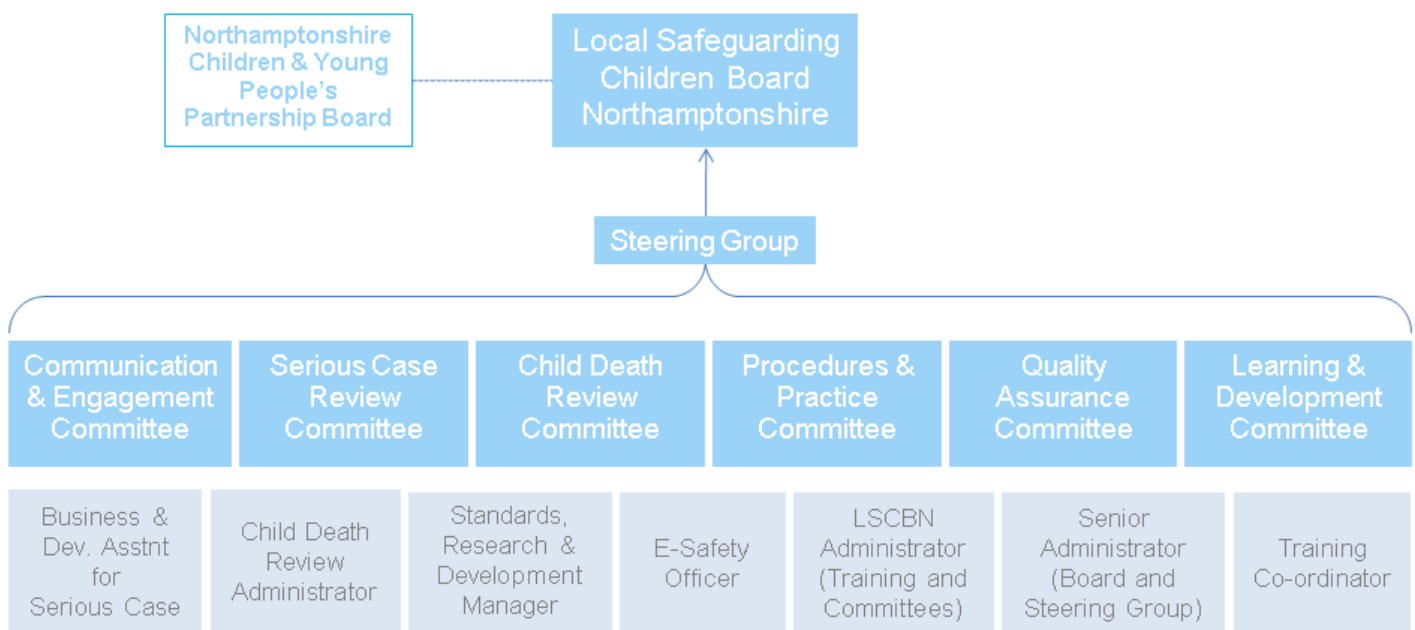
- the consistently satisfactory quality and timeliness of initial assessments
- prioritisation of continuous professional development for staff working in the service

The report identified a number of areas where improvement can be made, including the need to address:

- inconsistent distribution of social work resources
- inconsistent formal recording of management guidance and direction
- insufficient ownership by partner agencies of standardised approaches to assessments, resulting in inappropriate referrals

LSCBN will monitor areas for improvement through the Business Plan.

LSCBN Structure



Structure of the local Safeguarding Children Board

LSCBN Board – Acting Chair: Adrian Bell

The LSCBN brings together the senior officers from all agencies who work with children and families in Northamptonshire and oversees the effectiveness of their arrangements to safeguard and promote their welfare. The Board directs and oversee the work of its six committees.

Steering Group - Chair: Adrian Bell

Function: The purpose of the Steering Group is to support the Chair and Board in setting the strategic direction for the work of the LSCBN and its Committees and to oversee the performance management of the LSCBN Business Plan.

Child Death Review - Chair: Lorraine White

Function: Responsible for implementing procedures and protocols by collating and reviewing information on all child deaths within Northamptonshire, according to a nationally agreed data set and work with relevant professionals and organisations in a co-ordinated way to ensure that any lessons learnt contribute to safeguarding and promoting the welfare of children in the future.

Communications & Engagement - Chair: Tina Wetherall-Pegley

Function: The purpose of this Committee is to raise the profile of the board, its safeguarding objectives and to coordinate both the board and partner response at critical times to maintain public confidence in safeguarding in the county.

Learning and Development - Chair: Kara-Kim Wotton

Function: The Learning and Development committee is responsible for ensuring that single agency and inter agency training on safeguarding and promoting welfare is provided for people who work with children in Northamptonshire or in services affecting the safety and welfare of children.

Procedures and Professional Practice - Chair: Jane Napier

Function: To develop, review and update policies and procedures for safeguarding and promoting the welfare of children in the area covered by the LSCB. This includes ensuring effective dissemination of information.

Serious Case Review - Chair: Teresa De Vito

Function: The Serious Case Review Committee undertakes reviews of cases where abuse or neglect of a child is known or suspected, a child has died or been seriously harmed, and there is cause for concern as to the way in which the Board partners and other relevant people and bodies have worked together to safeguard the child.

Quality Assurance - Chair: Peter Boylan

Function: To monitor and evaluate the effectiveness of what is done by the Local Authority and Board partners, individually and collectively, to safeguard and promote the welfare of children and advise on ways to improve.

Membership of the Local Safeguarding Children Board Northamptonshire

The core members of the LSCBN are those who are designated as statutory members under Section 13(3) of the Children Act 2004. In addition, the NSPCC a national voluntary organisation with experience in safeguarding is represented, and a designated doctor and designated nurse provide appropriate expertise and advice to the Board.

Representatives from Primary Schools, Secondary Schools, Special Schools and Children's Health Services providers are also core members.

New core members will be added during 2010-11 in line with national guidance and statutory legislation (via the Apprenticeship, Skills, Children and Learning Act 2009). Two Lay Members will be recruited to support stronger public engagement and contribute to improved understanding of the LSCB's work.

Through its work and the work of Committee's, the LSCBN will also secure the involvement of other key agencies that have responsibility for safeguarding and promoting the welfare of children and young people. The Chief Officer/Senior Manager for each core member agency has designated named representatives with a strategic role in safeguarding to attend the LSCBN and as far as possible to ensure consistency and continuity in the membership.

All core members and associate members of the LSCBN have been provided with a written statement of their roles and responsibilities and their organisation has confirmed that they are able to:

- Speak for their organisation with authority
- Commit their organisation on policy and practice matters
- Hold their organisation to account (in matters of safeguarding children).
- Ensure implementation of key policies and strategies in their organisation

A written constitution and terms of reference have been established for the LSCBN, and terms of reference established for each Committee.

All of our statutory partners have participated in the work of the LSCBN through attendance at the Board, involvement in Serious Case Reviews and agencies have also benefitted from training delivered through the LSCBN multi-agency training programme.

Partnership agencies at the main Board meetings:

Partnership agencies
CAFCASS
Connexions
East Midlands Ambulance Service
East Midlands Strategic Health Authority
Kettering General Hospital NHS Foundation Trust
NHS Northamptonshire, Commissioning
NHS Northamptonshire, Provider Services
Northampton General Hospital NHS Trust
Northamptonshire County Council, Children & Young People's Services
Northamptonshire County Council, Lead Member for Children & Young People
Northamptonshire County Council, NorDAF
Northamptonshire County Council, Fire & Rescue Service
Northamptonshire County Council, Youth Offending Service
Northamptonshire Healthcare NHS Foundation Trust
Northamptonshire Police
Northamptonshire Probation Trust
NSPCC
Rainsbrook Secure Training Centre
Schools, Primary School Heads Consultative Forum
Schools, Secondary School Heads Consultative Forum
Schools, Special School Heads Consultative Forum
St Andrew's Healthcare

Supporting the Local Safeguarding Children Board Northamptonshire

The work of the Board is supported and coordinated by the LSCBN Business Office as follows:

Professional Advisor: (Interim)	Teresa De Vito
Standards, Research & Development Manager:	Beverley Czyz
Serious Case Review Business & Development Assistant:	Emma Mills
LSCBN Administrator:	Jeni England
Senior Administrative Assistant:	Laura Roper
Training Coordinator:	Ann White
Child Death Review Coordinator:	Lisa Walsh
e-Safety Officer:	Caroline Moore

The LSCBN business office is based:

First Floor, Century House, The Lakes, Northampton, NN4 7SJ.

Telephone 01604 654040

Fax: 01604 654000

Email: lscbn@northamptonshire.gov.uk

LSCBN Committees

Steering Group

The Steering Group has now completed its first full year of operation and is chaired by the Chair of the LSCBN. The remit of the Steering Group is to develop and drive the implementation of the LSCBN Business Plan and Partnership Agreement on behalf of the Board and to ensure that the work of the LSCBN, including cross-agency responsibility and accountability for safeguarding children and young people, is clearly understood and actions implemented.

The Steering Group has developed and implemented a Performance Framework that includes a scorecard that provides a performance rating and commentary regarding a range of indicators that contribute to safeguarding in the local area. A Business Plan reporting framework has been developed enabling the Steering Group to track progress on meeting actions within the

Child Death Review Committee

From April 1 2008, all LSCBs were expected to have in place a rapid response process to respond to unexpected child deaths and a Child Death Overview Panel (CDOP) to collate and analyse information about the deaths of children and young people (up to the age of 18) in their area. The CDOP will review all child deaths occurring in Northamptonshire in order to understand why children die and to make recommendations with the aim of improving services to bereaved families. The panel will also consider whether some child deaths were preventable and will examine trends and patterns to identify ways of preventing similar deaths in future. In Northamptonshire CDOP is

referred to as the Child Death Review Committee. The Steering Group has also implemented a number of governance documents which have been drawn into an overarching LSCBN Constitution further enhancing the understanding and contribution of partner agencies.

As part of its arrangements to strengthen links with the Children's Trust the Steering Group arranged a joint LSCBN and CYPPB event in December 2009 to jointly develop the Children and Young People's Plan (CYPP). This event was well attended and the work undertaken helped to ensure the CYPP had a clear focus on safeguarding.

The Steering Group has overseen the review of the Business Plan 2010/11 which will be taking the work of the board forward over the coming year and this can be found at page 28 of this document.

The aims of the child death review process are:

The aims of the child death review process are:

- to learn from all child deaths, enabling changes which may prevent future deaths.
- to identify whether deaths are preventable and work to reduce the numbers of preventable deaths over time.
- to improve the way in which each death is responded to ensuring a process that

provides good information and support to families at all stages.

- to ensure that families are offered bereavement services.

The Child Death Review Committee meets regularly to review anonymised data on all child deaths occurring in Northamptonshire, with the potential to carry out more detailed specific or thematic reviews if required.

The Child Death Overview Panel will consider:

- The factors (health, environmental, social and cultural) that led to the death of the child and any service involvement prior to that death.

- Groups of deaths to identify any emerging patterns or trends which indicate preventative factors that might impact on future deaths

- The Panel will refer to the LSCBN Chair any deaths where they feel there may be grounds for a Serious Case Review and explore why this has not previously been recognised.

The Child Death Overview Panel in Northamptonshire has considered 55 deaths during the period 1 April 2009 to 31 March 2010. 18 Deaths were unexpected and 37 were expected.

Age	Male	Female	Total
0–28 days	14	16	30
Under 1 year	3	4	7
1–4 years	6	3	9
5–15 years	3	5	8
16–18 years	1	0	1
Total	27	28	55

Communications and Engagement

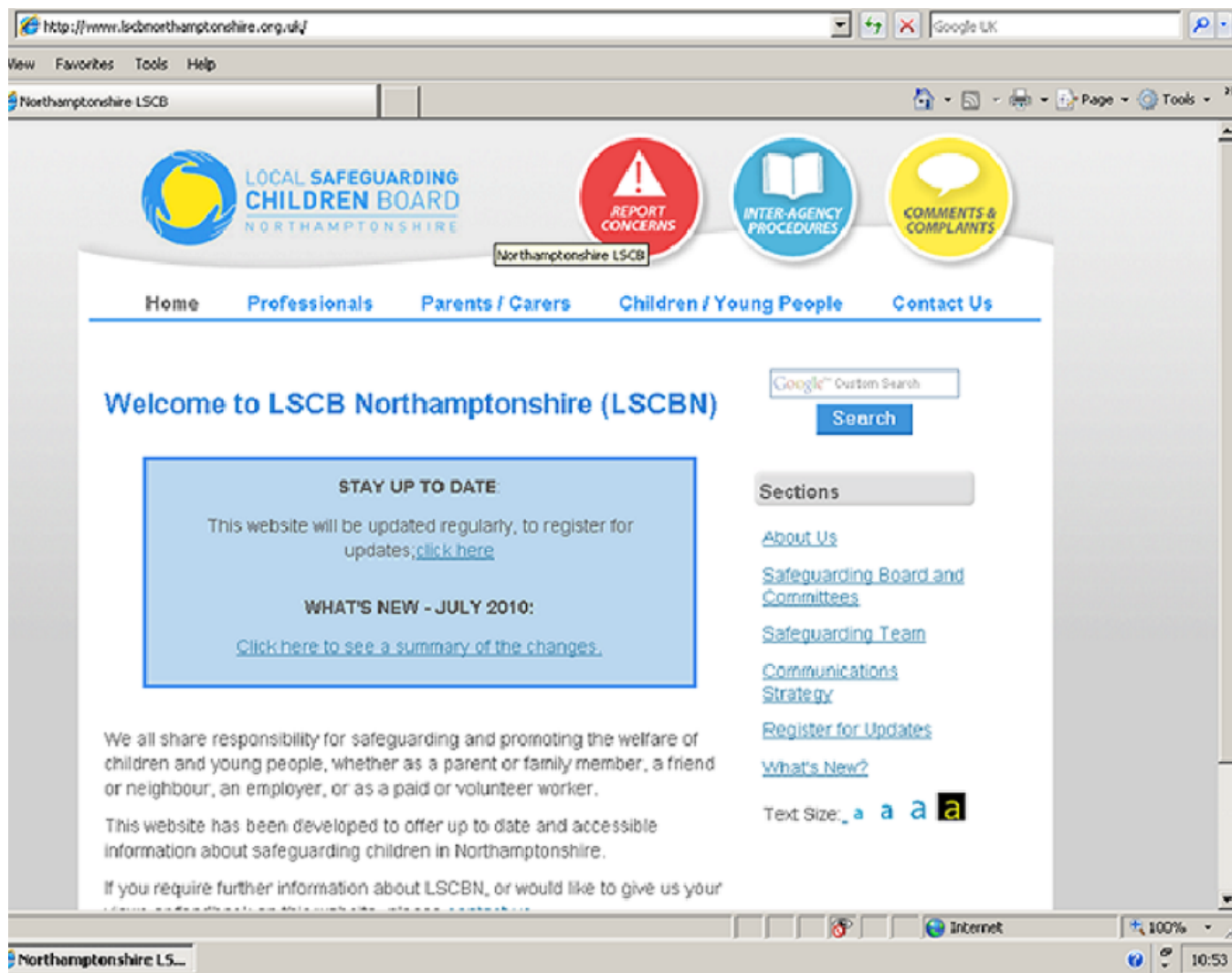
The Communications and Engagement Committee has been through a number of key changes in the last year with a change of Committee Chair and core membership. A significant piece of work for the Committee has been the implementation of a Communications Strategy setting out how and what the board will communicate to a range of audiences.

Within this strategy the Committee has worked with the Practice & Procedures Committee to develop a new LSCBN website that includes information about the work of the board and national and local safeguarding initiatives for professionals; children and young people; parents and carers and other interested parties. The website includes separate pages for each of the above groups and as part of its engagement work the

Committee will develop these pages further to ensure they are relevant and accessible for all and promote the message that safeguarding is everyone's

business. The LSCBN interagency procedures and practice guidance can also be found on the website.

www.LSCBNorthamptonshire.org.uk



The Communications and Engagement Committee has been the lead Committee in publishing the Executive Summaries Serious Case Reviews. These are referenced on the website. The Committee has produced a development and action plan that sets out its work for the coming year which includes:

- Publishing a periodic newsletter
- Coordinating LSCBN activity for 'think family' week

- Developing a rolling programme to enhance awareness of safeguarding children in specific circumstances
- Working alongside the Serious Case Review Committee to manage publicity arising from any reviews

- Ensuring lessons learnt are conveyed to professionals and accessible to all via the website
- Investigating opportunities arising from social media to

publicise the work of the LSCBN

- Managing the website contents in support of LSCBN business

Learning and Development Committee

The Learning and Development Committee on behalf of the LSCBN undertakes an audit of single-agency and multi-agency training provision on safeguarding and promoting welfare, taking into account the five Every Child Matters outcomes (with a particular focus on the “Stay Safe” outcome) and the six common core skills of knowledge. The Committee will promote awareness of the work of the LSCBN among agencies and in the community.

Working Together (2010) provides guidance on the training and development of staff and volunteers to help them safeguard and promote the welfare of children effectively. The Committee agrees the multi-agency safeguarding training to promote collaborative working



arrangements both within individual agencies and across organisational boundaries.

From 1st April 2009 to 31st March 2010 the LSCBN trained over 1100 delegates and evaluations returned have shown the training to be of a consistently high standard. All multi-agency training has been provided free at the point of delivery to organisations including those who are not members of the Board unless they are a profit making organisation.

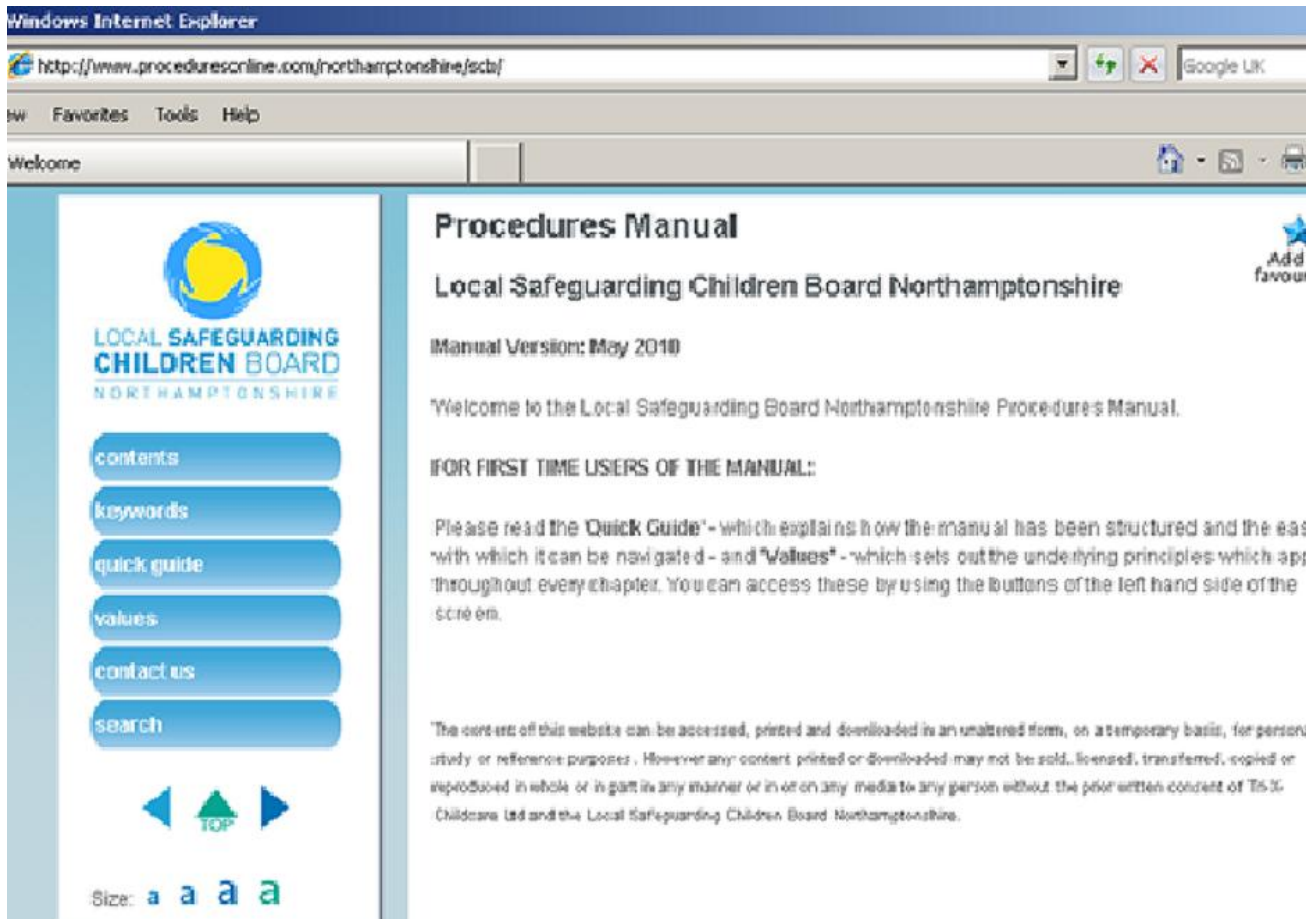
During the period 43 courses were delivered over 58 days with an average of nearly 18 people attending each day. 17 separate courses are now available including a course for those who supervise safeguarding practice and a range of subjects focusing on parental issues and the impact on parenting capacity. In addition the Training Co-ordinator has delivered Introduction to Safeguarding courses to over 250 people from a range of independent and voluntary agencies.

A comprehensive Training Needs Analysis was carried out in December which was used to determine training needs and inform development of the Training Programme for the coming year. A Training Strategy has also been developed and agreed by the Board.

Practice and Procedures Committee

The Practice and Procedures Committee advises the LSCBN on policies which safeguard children and young people within Northamptonshire. This includes policy and guidance implementation to ensure compliance and embedded cultural change within every agency and locality. The Committee will ensure that there are clear thresholds and processes in place and a common understanding of them across partner agencies.

The 2009/10 Practice & Procedures action plan was comprehensive and ambitious in aiming to address a range of outstanding safeguarding issues. A key piece of work for the Committee has been the development of web-enabled inter-agency Safeguarding Procedures which are fully refreshed and consistent with current legislation and the requirements of Working Together (2010).



These procedures are available via the LSCBN website or via the following hyper link:
<http://www.proceduresonline.com/northamptonshire/scb/>

Practice & Procedures Committee works across the LSCBN Committee structure to ensure multi agency policies, procedures and guidance are reviewed as a result of

Serious Case Reviews, Quality Assurance or Audit work and disseminates this work through Communication & Engagement and Learning & Development Committee's

Serious Case Review Committee

The Serious Case Review Committee advises the LSCBN on processes, procedures and outcomes in relation to conducting serious case reviews under the guidance in Chapter 8 of Working Together 2010, and has a close working relationship with the Child Death Review Committee.

During 2009-2010, the Committee continued to develop services and good practice based on actions from previous Serious Case Reviews including the satisfactory re-reviews of Serious Case Reviews initially judged inadequate. Learning from Serious Case Reviews was the topic of the LSCBN conference in May 2009 and learning from both local and national Serious Case Reviews was disseminated alongside the impact of this learning on practice.

In the year 2009-2010 the Serious Case Review Committee considered six referrals:

- 1 reached the threshold for a Serious Case Review
- 3 are being managed as either single or multi agency practice reviews
- 2 will be considered for inclusion into a targeted audit

In addition, the Committee co-ordinated work from Northamptonshire agencies

Quality Assurance Committee

The purpose of the Quality Assurance Committee is to put in place effective systems and processes for the monitoring of safeguarding activity in Northamptonshire. In its advisory capacity to the Board it also provides summary information and reports to the Board so

that was required for three Serious Case Reviews led by other local authorities. Some of this cross border work was very complex and we have ensured the learning from this process has been captured and will feed into a Serious Case Review Cross Border Protocol for use in the future.

Progress on single and multi agency action plan monitoring continues to ensure the learning from reviews is implemented and that the LSCBN fully understands the impact of the actions upon practice and is able to demonstrate and report on improvement. In addition there is clear evidence of progress in the ways agencies work together to safeguard children in Northamptonshire.

Learning from Serious Case Reviews is included in the LSCBN training plan and the Training Coordinator is a member of the Serious Case Review Committee to ensure robust links with the Learning & Development Committee.

Learning from local and national reviews has assisted with the re-write of the Serious Case Review process for the LSCBN. The Board now has a robust process with a revised IMR authors pack and briefing including an IMR template and guidance.

that it can comply with its statutory functions and oversee achievement of the Staying Safe outcomes.

During the last year the Quality Assurance Committee has been working on:

- Reviewing key LSCBN functions and whether they are being carried out effectively via monitoring of key elements of the Business Plan
- Reviewing evidence of demonstrable outcomes and learning from Serious Case Reviews (SCR)
- Reviewing the monitoring of the training, development and SCR recommendations and putting in place arrangements to monitor and audit them to identify effective implementation and areas for further improvement.
- Providing reports to the Board and Steering Group in order to inform monitoring, decision-making and planning.



E-safety

The LSCBN has an e-safety Officer who is responsible for developing and implementing an e-safety Strategy, providing advice, support and training and acting as a key point of contact, across partner agencies. This includes supporting the development and delivery of materials to parents, children and young people as required.

The e-safety strategy is modelled on examples of good practice from neighbouring LSCBs and BECTA's 'Safeguarding Children in a Digital World' guidance. It was developed by a multi-agency e-Safety Strategy Group under the auspices of the Practice & Procedures Committee.

All members of the strategy group are CEOP (Child Exploitation and Online Protection) trained and accredited to deliver internet safety training to 11-16 year olds. The aim is for members to become CEOP Ambassadors which will allow them to cascade the CEOP course to other adults and professionals within the county and continue to raise the profile of e-Safety. A recent addition to the strategy is to ensure that member

agencies embed the CEOP Report button within their organisation's website in any location that children and young people may visit.

The Northamptonshire Acceptable Use Policy (2008) was also reviewed in November 2009 and adopted by the board in May 2010. The revised document is in line with current BECTA guidance and can be adapted by schools to meet their specific needs.

In response to a number of queries from private and voluntary organisations, regarding the Acceptable Use Policy, the Strategy group produced two further documents:

a smaller Acceptable Use Policy for voluntary organisations (such as Scouts, youth clubs) to assist with the safe use of technology

the second was specifically created for the safe development of a social networking page.

Both documents are available via the LSCBN website and the e-Safety area of the school's learning platform.

e-Safety training achievements
August 2009- May 2010:
5,000+ Children and Young People received awareness training
700 (approx) Parents and Carers received awareness training
525 School Staff trained
(including teachers, governors, support staff, lunchtime supervisors)
141 Primary, Secondary and Special schools requested and received e-Safety support
76 Primary, Secondary or Special schools visited by the e-Safety Officer.
84 professionals trained to deliver CEOP Think u know programme to 11-16 year olds. (including health, police, education, social care)
37 professionals received multi-agency Cyber-bullying training
(including health, police, education, social care)

LSCBN Achievements

KEY ACHIEVEMENTS	IMPACT ON CHILDREN, YOUNG PEOPLE AND FAMILIES
The LSCBN has an independent chair.	Provides a clear and distinct identity for the LSCBN and strengthens its strategic position and scrutiny of practice across all agencies.
Development of the Serious Case Review process and templates to ensure the LSCBN meets the Working Together guidance. Arrangements in place to ensure the Serious Case Review Panel Chair and Overview Report Author are independent of the LSCBN	Provides public confidence in the serious case review process and evidence of lessons learnt by agencies to ensure multiagency practice is robust and can protect and safeguard children and young people.
The development of a LSCBN Serious Case Review process	Ensure consistency of practice and approach Across Northamptonshire
Development of the LSCBN website which contains local and national child protection and safeguarding policies and Procedures	Provides staff with interactive procedures which are kept current and underpinned by research. Ensures communication of good practice across Northamptonshire
Contribution to and scrutiny of the Children and Young People's Plan for Northamptonshire. The LSCBN will monitor, evaluate, question and challenge the Children's Trust Board in its delivery of responsibilities for children and young people's safety.	Given the move to a more strategic approach the LSCBN is able to influence and monitor the CYPP to ensure that the Stay Safe element of the plan reflects the LSCBN Business Plan. Publication of the LSCBN Annual Report & Business Plan reviewing and planning safeguarding and child protection practice.
Continuation of the LSCBN multiagency training strategy and training programme	Aims to make sure that all staff working with children and young people within Northamptonshire and elected members are sufficiently well trained to identify vulnerable children, to make sure that those children are provided with a service or referred for appropriate services, and to be able to contribute to inter-agency work to make sure that the child's welfare is promoted.
Development of LSCBN website – http://www.proceduresonline.com/northamptonshire/scb/ and provision of a communications strategy.	Aims to ensure four distinct groups of service users – children/young people, adults, agencies and the voluntary sector – are aware of the LSCBN, the principles of safeguarding and promoting the welfare of children and the support available.

Securing of primary and secondary school representation on the LSCBN	Coupled with the work undertaken by the Safeguarding in Education Officers, this aims to ensure that safeguarding is embedded within schools and other education establishments.
Roll out of a Section 11 audit	This audit will establish the approach partner agencies are taking in safeguarding and allegations work. The results will inform next year's work plan and provide a baseline by which the Board can measure the effectiveness of safeguarding in Northamptonshire.
Development of Communication Strategy	The Communications Strategy ensures that the LSCBN fully discharges its core responsibility to: <i>"communicate to people and bodies in the area to safeguard and promote the welfare of children, raising awareness of how this can best be done, and encouraging them to do so"</i> . The LSCBN's principle channel of communication will be the website. Other ways of communicating will be via Newsletters, and through young people's participation.
Multi-agency accountability	Each partner agency has contributed an Annual Safeguarding Report which will be used to evidence action alongside the Section 11 audit returns.

Child Protection

Annual Report of Child Protection Trends in Northamptonshire

Since April 2009 each child who is subject to significant safeguarding concerns has been made the subject of a child protection plan, prior to April 2009 the Child Protection Register was used. Plans focus on issues identified by core assessments, such as the child's developmental needs (education and health), family and social relationships, parental capacity, and environmental issues.

Numbers of children in need of protection

The percentage of referrals leading to initial assessments was reported as 57.8% for 09/10. This is above the average for statistical neighbours.

77.3% of Initial Assessments were completed within 7 days. The average for England was 72.9% and the average for statistical neighbours was 77.7%. Overall 2,700 Initial Assessments were completed during 09/10.

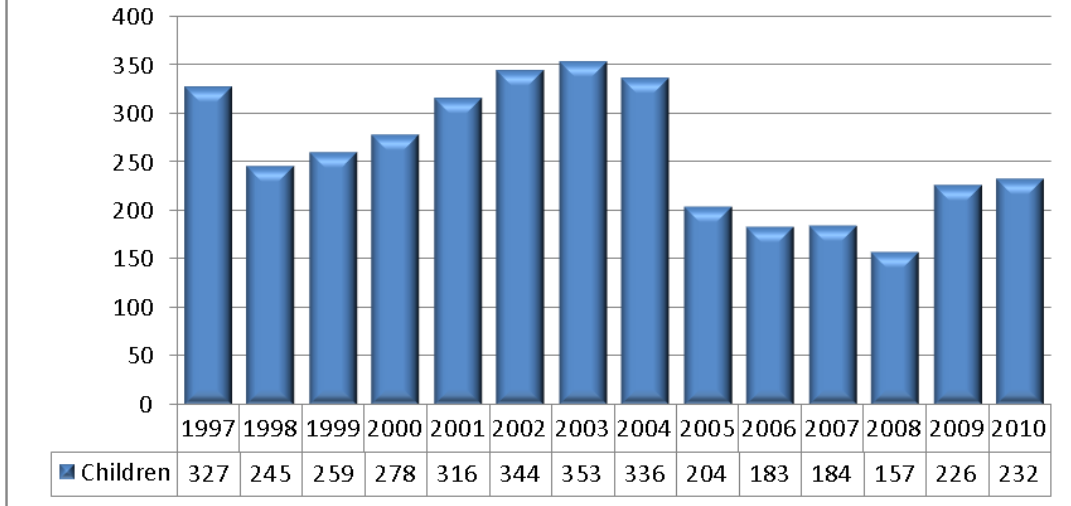
The number of Core Assessments completed on time during the year decreased from 564 in 08/09 to 478 in 09/10. This equates to 69.5% which is below the statistical average for England of 77.5% and our Statistical Neighbour average which is 73.9%. The data relating to this indicator is being investigated by operational managers to ensure that all Core Assessments have been captured.

Child Protection Conferences

Child Protection Conferences 2005 to 2010	2005	2006	2007	2008	2009	2010
Number of Child Protection Conferences held	603	441	414	374	449	433
Initial Conferences	183	141	128	110	159	137
Review Conferences	410	287	281	247	278	282
Combined Conferences	10	13	5	17	12	14
Number of Children Conferenced	1,266	1,044	943	935	948	1,040
giving an average case size of	2.1	2.3	2.3	2.5	2.1	2.4
Number of Children Registered at Conference	265	271	239	196	298	279
Re-Registrations	26	42	27	23	41	16
Number of Children not Registered at Conference	108	83	52	52	50	54
Number of Children De-registered at Conference	390	292	238	223	230	272

As shown in the chart below the number of children with a Child Protection Plan has increased from 226 on 31 March 2009 to 232 on 31 March 2010. This equates to 15.1 children per 10,000 population under 18. There is an expectation that there will be an overall national increase in the number of children with a child protection plan following the reports into the death of Baby P.

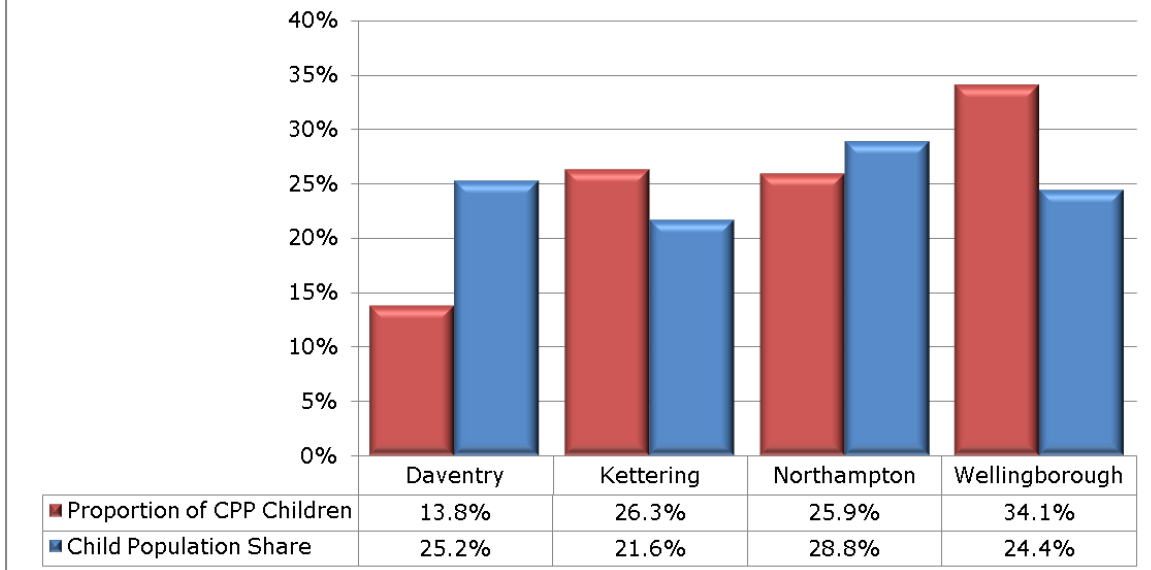
Number of Northamptonshire Children Subject of a Child Protection Plan at Year End 1997 - 2010



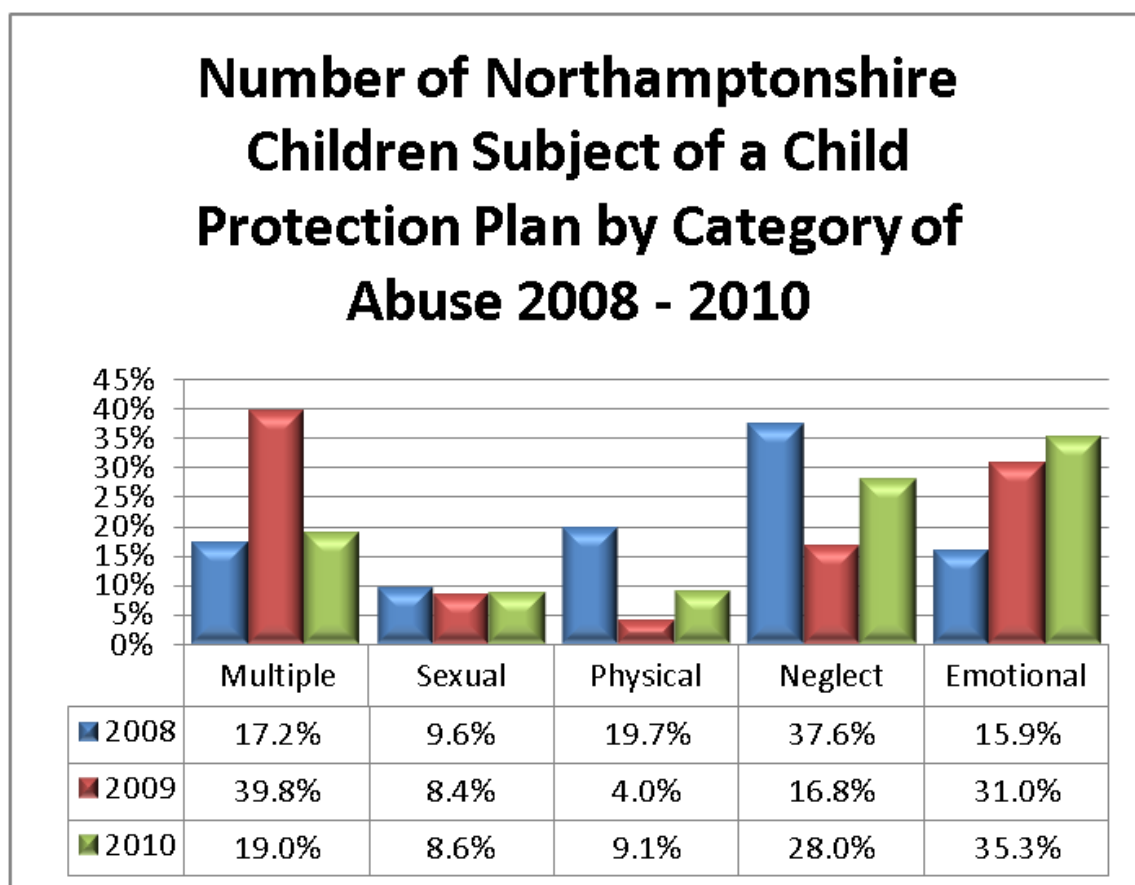
The following chart shows the proportion of children subject to a Child Protection Plan by area. It can be seen from this chart that the Wellingborough area has the highest proportion of children subject to a Child Protection Plan in relation to the child population share while Daventry has the lowest. Further analysis is being undertaken to establish the causes and significance of this.

NB: In this chart Daventry refers to Daventry & South Northants; Kettering refers to Corby & Kettering; Wellingborough refers to East Northants & Wellingborough

Proportion of Northamptonshire Children Subject of a Child Protection Plan by Area in 2010



The following chart shows the category of abuse where children were the subject of a Child Protection Plan from April 2008 to March 2010. This shows that use of multiple categories fell by over 50% from 2009 to 2010 and use of the emotional category more than doubled from 2008 to 2010.



Following the national trend, sexual abuse accounted for the fewest number of registrations year on year. Emotional abuse accounted for 31% of plans in 08/09 and 35.3% in 09/10.

In addition to the above charts other child protection data shows:

- The national figure for child protection plans lasting 2 years or more is 5.3%. Northamptonshire is significantly lower at 1.1% and greatly improved from last year's data.
- Performance against the indicator for children subject to a child protection plan for a second or subsequent time has improved from 13.8% in 08/09 to 5.7% in 09/10

Finance

The LSCBN is funded under arrangements arising from Section 15 of Children Act 2004. The budget for each LSCB and the contribution made by each member organisation is agreed locally. The member organisation's shared responsibilities for the discharge of the LSCBN's functions include a shared responsibility for determining how the resources are to be provided to support it.

In the last two years the LSCBN has had additional financial responsibilities relating to Serious Case Reviews, Child Death Reviews and the development and implementation of policy, procedures and guidance and training. Costs have risen as a result. There has been no increase in contributions from agencies as the board was able to secure some additional funding to fund the e-Safety delivery and to make some efficiency savings and generate some income from training delivery.

As shown in the budget tables below the board achieved balanced budgets in 2009/10 with the final under spend being the balance of the Serious Case Review contingency.

LSCBN INCOME		LSCBN EXPENDITURE 2009/10	
B/Fwd from Previous Year	31,000	Employees	194,543
Child Death Grant	73,000	Office Costs	2,595
Connexions	2,101	BOARD Costs	22,950
Northamptonshire Police	23,123	Training Delivery (BP2.1B & 7.3)	37,766
Northamptonshire Teaching PCT	53,405	E-Safety (BP 8.3)	3,450
Section 28a Grant	20,881	SCR (BP 6.2 & 6.3)	11,008
CAFCASS	500	CDR (BP 6.7)	1,819
Probation Service	4,325	Third Party Payments	20,568
NCC	76,913	Cashable Business Plan Activities	17,160
Chronolator Grant	2,520	TOTAL EXPENDITURE	311,859
E-Safety	50,000		
Income from Training Delivery	3,650		
TOTAL INCOME	341,418	UNDERSPEND 2009/10	-29,559

Above: Tables showing Final Outturn 2009 – 2010

The budget for 2010/11 has been set on the basis of an interim funding formula based on the following principles:

- Existing revenue contribution will continue in 2010/11 at the same level.
- Each District and Borough Council, as a statutory partner of the LSCBN, will make a contribution for 2010/11 of £1,000 to the LSCBN revenue budget.

Business Plan

I am pleased to introduce to you the refreshed Local Safeguarding Children Board Northamptonshire (LSCBN) Business Plan for the next year. Following a review of progress of the Business Plan agreed by LSCBN last May this plan has been developed under the auspices of the LSCBN Steering Group.

The Local Safeguarding Children Board Northamptonshire (LSCBN) is the key statutory mechanism for agreeing how the relevant organisations in Northamptonshire cooperate to safeguard and promote the welfare of children and young people. The LSCBN has a strategic role in challenging the overall safeguarding work of the Children's Trust Board and for ensuring continuous improvement in practice. Working closely with the Children's Trust Board the LSCBN takes lead responsibility for:

- Co-ordinating the safeguarding work of Children's Trust partners
- Monitoring the quality and consistency of safeguarding practice and training across all partner agencies in the Children's Trust.

The LSCBN is not an operational body or one that delivers services to children, young people or their families. Its role is co-ordinating and ensuring the effectiveness of what its member organisations do, and contributing to broader planning, commissioning and delivery. To take forward its co-ordinating and monitoring roles, LSCBN is responsible for the following functions:

- Monitoring how well statutory agencies are carrying out their responsibility under section 11 of the Children Act 2004 to safeguard and promote the welfare of children, including their safe staffing arrangements.
- Setting up and running a programme of multi-agency safeguarding training
- Drawing up and monitoring the implementation of LSCBN inter-agency procedures
- Undertaking a Serious Case Review (SCR) when a child dies, and abuse or neglect is known or suspected to be a factor in the death; the purpose of SCRs is to establish the lessons to be learned from the case and how they will be acted upon, and as a consequence, improve inter-agency safeguarding of children
- Taking an overview of all child deaths (under 18 years) in the area, identifying any potentially contributory recurrent themes, circumstances, or possible limitations in service provision by one or more agencies.

The LSCBN Business Plan has been refreshed to ensure the priorities agreed in 2009 are relevant in driving the work of the LSCBN over the next year. The priorities have therefore been revised and streamlined into the following to 4 key priorities:

1. The LSCB has effective structure, processes and resources in place to secure better outcomes and carry out its functions
2. Staff Recruitment, Training and Support arrangements meet or exceed the national standards for safeguarding children and young people
3. The LSCBN engages communities and organisations in safeguarding children & young people
4. All children and young people are safeguarded through universal, proactive targeted and responsive protective services

The following pages outline the objectives within these priorities and how the Board, its committees and professional staff will work with others to deliver them. It is intended to refresh the objectives again at the start of the new Business Year in April 2011 in order to build upon those that have been achieved and ensure that the work of the Board remains focused on delivering the best outcomes for our children and young people into 2011/12.

Adrian Bell
Steering Group Chair and Vice Chair of the Board

	Objective	Impact Measure	Milestones (where applicable)	Completion Date	Owner(s)	Progress BRAG Rating
1 The LSCB has effective structure, processes and resources in place to secure better outcomes and carry out its functions						
1.1	Improve the LSCB's monitoring of the Children's Trust's performance on Safeguarding through the performance framework scorecard	Improve the safeguarding of all children and young people in Northants LSCBN meets requirements of Working Together Chapter 3 and is 'fit for purpose'	Carry out review of all current indicators used in scorecard to improve relevance in measures used	September 2010	Chair Quality Assurance Committee	BLUE
			Ensure performance framework scorecard represents multi-agency metrics contributing to the desired outcome	November 2010	Chair Quality Assurance Committee	BLUE
			Establish systems and processes to provide robust challenge to Children's Trust Board and its partners.	December 2010	Steering Group	BLUE
			Provide an Annual Report for the Children's Trust that focuses on the effectiveness of safeguarding in Northants	February 2011	Steering Group	BLUE
			Re-launch the performance framework scorecard to the LSCB Board	January 2011	Chair Quality Assurance Committee	BLUE
			Provide regular reports on performance to the LSCB Board via Steering Group	March 2011	Chair Quality Assurance Committee	BLUE
1.2	Review the JD and person specification for the independent chair to reflect the latest statutory guidance and appoint a new independent chair of the board for a 3 year fixed term.	Effective leadership of the board secured for further developments and performance improvement in safeguarding.	Recruitment and selection process with timeline for appointment by end July	July 2010	Business Office	GREEN
1.3	Review and evaluate the LSCBN structure to ensure that structures and process deliver the most effective scrutiny of safeguarding, are efficient and cost effective.		Board away day October 21 st 2010 to review effectiveness of current arrangements and agree changes/developments. Ensure Terms of Reference are reviewed annually Ensure all members have clarity about roles, responsibilities and expectations	October 2010	Independent Chair and Steering Group	BLUE
1.4	The LSCB and its partner agencies are all compliant with the requirements for Working Together 2010 and section 11	Establish a baseline of current arrangements for safeguarding using a S11 audit tool	A Section 11 audit toolkit designed and implemented and all partners are supported to complete the S11 tool	October 2010	Chair Steering Group	BLUE

	Objective	Impact Measure	Milestones (where applicable)	Completion Date	Owner(s)	Progress BRAG Rating
	requirements of Children Act 2004		Inter-agency procedures fully reflect requirements of Working Together 2010	July 2010 onwards	Chair Steering Group	BLUE
			Annual Audit of Agency compliance in place in relation to policies, procedures and front-line practice	March 2011	Chair Steering Group	BLUE
1.5	The work of the LSCB is co-ordinated with the work of the Children and Young People's Partnership Board	The protocol between the LSCB and CYPPB is supported by appropriate business processes and operating effectively	Protocols established for joint working between LSCBN and CYPPB	July 2010 onwards	Independent Chair LSCBN & DCS	BLUE
		Coordinated engagement between boards	Work with the Media officer for the CYPB to ensure coordinated media strategies and a shared understanding of issues of interest relevant to safeguarding	September 2010	Communications & Engagement Committee	BLUE
2 Staff Recruitment, Training and Support arrangements meet or exceed the national standards for safeguarding children and young people						
2.1	Professionals are provided with appropriate, good quality and accessible training on safeguarding and promoting the welfare of children	A Learning and Development Programme that is responsive to the needs of the workforce and in line with statute requirements	Implement a Quality Assurance Framework for safeguarding training, single agency and multi agency, that includes needs analysis, quality monitoring and evaluation of impact	November 2010	Chair Learning & Development Committee	BLUE
			Annual L&D programme revised as a result of TNA, SCR and legislation requirements	March 2011	Chair Learning & Development Committee	BLUE
			Quarterly analysis of training uptake by each agency reported to LSCBN	September 2010	Chair Learning & Development Committee	BLUE
2.2	Safe recruitment practices in Northamptonshire are effective and compliant with national requirements	All agencies have effective policies and procedures in place based on national guidance for checking the suitability of people applying to work with children and young people	Agree indicators to measure safe staffing practices across all agencies	September 2010	Chair Quality Assurance Committee	BLUE
			Include performance indicators in the performance framework scorecard	November 2010	Chair Quality Assurance Committee	BLUE

	Objective	Impact Measure	Milestones (where applicable)	Completion Date	Owner(s)	Progress BRAG Rating
			Request assurance from all agencies on the agreed indicators	November 2010	Chair Quality Assurance Committee	BLUE
			Receive assurance statements from all agencies on all relevant indicators	February 2011	Chair Quality Assurance Committee	BLUE
			Provide report to the LSCB Board on multi-agency assurance and repeat annually	February 2011	Chair Quality Assurance Committee	BLUE
2.3	Arrangements are in place for sharing good practice between agency professionals and for promoting collaborative inter-agency working	Evidence of tangible improvements in safeguarding practice and inter-agency collaboration The training pool is highly skilled ensuring the workforce is trained to at least national standards.	Ensure that all safeguarding training is informed by LSCBN committee's and their work and available to LSCBN partners	November 2010	Chair Learning & Development Committee	BLUE
			Develop a glossary of terms to promote shared understanding and a common language	March 2011	Chair Learning & Development Committee	BLUE
			Programme evaluated and report submitted to Steering Group	April 2011	Chair Learning & Development Committee	BLUE
3 The LSCBN engages communities and organisations in safeguarding children & young people						
3.1	The LSCBN promotes and publicises the message that safeguarding children is everybody's business	Arrangements to measure the awareness of the public and professionals of the LSCB work and their responsibility for safeguarding children is included in LSCB Performance Framework The LSCBN promotes and publicises the message that safeguarding children is everybody's business	Manage communications of any business plan to partners and key stakeholders	September 2010	Chair Communication & Engagement Committee	BLUE
			Continue to develop a rolling programme to enhance awareness in order to develop safeguarding knowledge	September 2010	Chair Communication & Engagement Committee	BLUE
			To work alongside the SCR committee to manage publicity arising from any SCR or IMR involving professionals or victims linked to Northamptonshire	July 2010 onwards	Chair Communication & Engagement Committee	BLUE

	Objective	Impact Measure	Milestones (where applicable)	Completion Date	Owner(s)	Progress BRAG Rating
			To ensure lessons learnt are conveyed to professionals and accessible to all via the website	July 2010 onwards	Chair Communication & Engagement Committee	BLUE
			To investigate opportunities arising from social media to publicise the work of the LSCB	November 2010 onwards	Chair Communication & Engagement Committee	BLUE
			To manage the website contents in support of LSCB business	July 2010 onwards	Chair Communication & Engagement Committee	BLUE
3.2	Minority and faith groups within the community are effectively engaged in safeguarding and promoting the welfare of children	Evidence that minority and faith groups are effectively engaged and represented in the LSCBN's work	Strategies are in place LSCBN receives reports via the Communications & Engagement Committee	March 2011	Chair Communication & Engagement Committee	BLUE
3.3	Children and young people are engaged in the work of the LSCB	Evidence that the views of children and young people are heard and represented in the LSCBN's work	Children and Young People's Shadow Board has a designated Safeguarding Member Children and young people are represented in the LSCBN	March 2011	Chair Communication & Engagement Committee	BLUE
4 All children and young people are safeguarded through universal, proactive targeted and responsive protective services						
4.1	Basic child protection practice is effective	Ensure that thresholds for access to services and other relevant policies are clear, appropriate, well understood and applied consistently.	Regularly review all points of referral where concerns about a child's safety are received to ensure they are sound in terms of the quality of risk assessments, decision making, onward referrals and multi agency working	March 2011	Chair Steering Group	BLUE
			Review and revise eligibility and threshold guidance Evaluate the role of key designated child protection leads across agencies.	March 2011	Chair Steering Group	BLUE

	Objective	Impact Measure	Milestones (where applicable)	Completion Date	Owner(s)	Progress BRAG Rating
			Evaluate the effectiveness of supervision across agencies Improve multi agency engagement and attendance at CP Conferences and Core Groups	March 2011	Chair Steering Group	BLUE
4.2	Basic safeguarding practice for vulnerable groups of children & young people is effective	Improve the interface between specialist, targeted and universal services. Through the S11 audit in October 2010, deficits in safeguarding practice for vulnerable groups is identified and addressed by the respective agencies, reporting on actions to the board.	Develop and implement guidance for use with assessments (CAF, Initial Assessment , Core Assessment)	March 2011	Chair Steering Group	BLUE
			Ensure workers across agencies understand the importance of family history and have effective processes in place to gather, record and review family history including use of chronologies	March 2011	Chair Steering Group	BLUE
			Review policy on children who go missing from home and care and ensure this is disseminated across all agencies	March 2011	Chair Steering Group	BLUE
			Ensure the LSCBN maintains an overview of any work to safeguard children who are privately fostered	March 2011	Chair Steering Group	BLUE
			All services working with looked after children ensure that their welfare is adequately safeguarding and that deficits are addressed.	March 2011	Chair Steering group	BLUE
			All services working with looked after children ensure that their welfare is adequately safeguarding and that deficits are addressed.	March 2011	Chair of Steering Group	
4.3	Robust processes are in place to conduct effective Serious Case Reviews	The grading of all Serious Case Reviews is at least good.	Robust business processes are in place to ensure that all SCR's meet the requirements of Chapter 8 of Working Together to Safeguard Children (2010)	September 2010	Chair Serious Case Review Committee	BLUE
		Evidence available of timely learning from SCR recommendations	The final recommendations of SCR's are translated into actions that are SMART and include arrangements for monitoring.	July 2010 onwards	Chair Serious Case Review Committee	BLUE

	Objective	Impact Measure	Milestones (where applicable)	Completion Date	Owner(s)	Progress BRAG Rating
			The methods of disseminating learning from SCR's and evaluating the effectiveness and impact of the different approaches are broadened	October	Chair Serious Case Review Committee	BLUE
4.4	All learning is identified and recommendations from Serious Case Reviews are fully implemented	Evidence of good practice reported in audit of cases	Recommendations of SCR are evident in briefing sheets, sessions and learning and development programmes	From July 2010 onwards	Chair Serious Case Review Committee	BLUE
			Action plans updated bi-monthly, action evidenced and signed off by SCR Committee	From July 2010 onwards	Chair Serious Case Review Committee	BLUE
			Quality assurance mechanism in place with regular audit in place	March 2011	Chair Serious Case Review Committee	BLUE
4.5	Children are better safeguarded through implementation of a multi-agency Children in Need Framework which improves the quality and quantity of initial and core assessments and child protection plans.	Qualitative and quantitative data relating to: - <ul style="list-style-type: none"> • Number of IA and CAs • Percentage in timescale • Percentage resulting in S47 enquiries • Rate of children subject to CP plans 	Neglect Assessment tool is in use across all agencies The Audit of conversion rates in place Multi-agency audit evidences qualitative improvements Guidance on thresholds is in place Performance improves to meet targets	March 2011	Chair Practice & Procedures Committee & Chair Quality Assurance Committee	BLUE
4.6	Safeguarding children is a priority within all service provision to adults by organisations in Northamptonshire	Ensure there are strong links between adult and children's safeguarding at all levels	Develop reciprocal arrangements and representation between LSCBN and Adult Safeguarding Board	March 2011	Independent Chair LSCBN & DCS	BLUE
			Monitor training to ensure that all relevant adult practitioners receive safeguarding training	March 2011	Independent Chair LSCBN & DCS	BLUE
		Improve response to known parental and family risks for safeguarding children, addressing issues relating to mental health, learning disability,	Use LSCBN Communication channels to promote policies, procedures and strategies across adult services	March 2011	Independent Chair LSCBN & DCS	BLUE

	Objective	Impact Measure	Milestones (where applicable)	Completion Date	Owner(s)	Progress BRAG Rating
		substance misuse and domestic violence	Improve the recognition across agencies of the risks to children when an adult carer/parent is exposed to domestic violence, is engaged in substance misuse or has a learning disability and/or mental health. In particular improve the assessment of the impact of this on parenting capacity	March 2011	Independent Chair LSCBN & DCS	BLUE
4.7	The Northamptonshire Child Death Review Service is effective; bereaved families are supported and learning from reviews embedded in procedures and practice	Ensure mechanisms for the collection of Child Death data are robust and sustainable. Ensure the findings and recommendations from child death overview panel are reported and disseminated.	Produce an Annual Report that details activity, identifies common themes and makes recommendations for improvements.	March 2011	Chair Child Death Review Committee	BLUE
			Complete the DCSF audit for CDOP.	March 2011	Chair Child Death Review Committee	BLUE

Business Plan 2010

BRAG RATING

BLUE = NOT YET STARTED

RED = WILL NOT BE ACHIEVED

AMBER = IN PROGRESS BUT AT RISK OF NOT BEING ACHIEVED

GREEN = ACHIEVED OR WILL BE ACHIEVED WITHIN TIMESCALES

GLOSSARY OF TERMS

LSCBN = Local Safeguarding Children Board Northamptonshire

SG= Steering Group

CDR = Child Death Review Committee

C&E = Communications and Engagement Committee

L&D = Learning and Development Committee

QA = Quality Assurance Committee

P&P = Procedures and Practice Committee

SCR = Serious Case Review Committee

DCS = Director of Children's Services

CYPD = Children and Young People's Directorate

CYPPB = Children and Young People's Partnership Board (Children's Trust)

NCC= Northamptonshire County Council